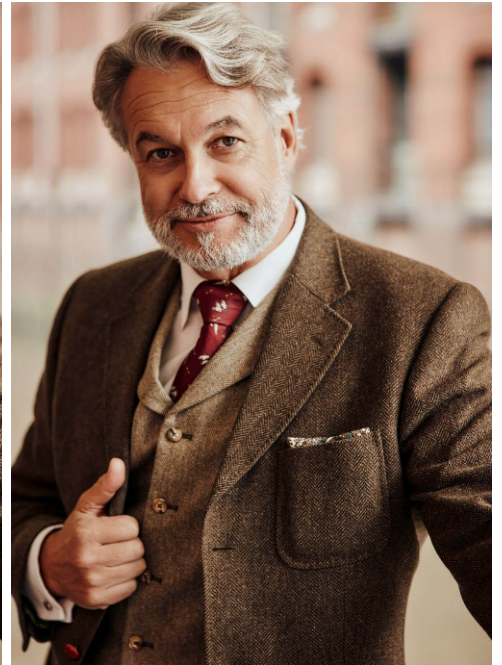


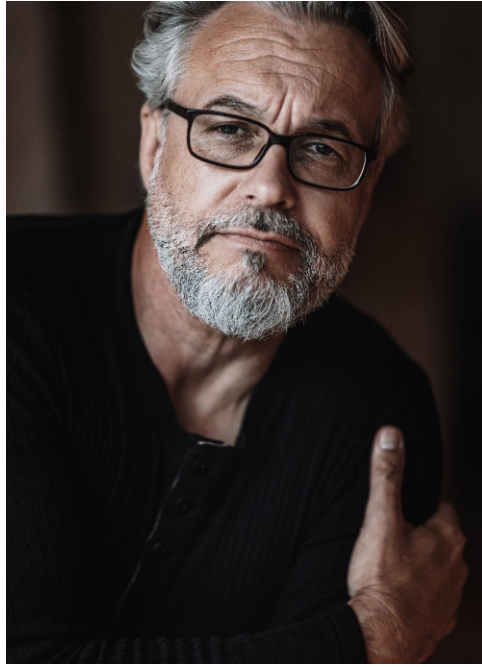


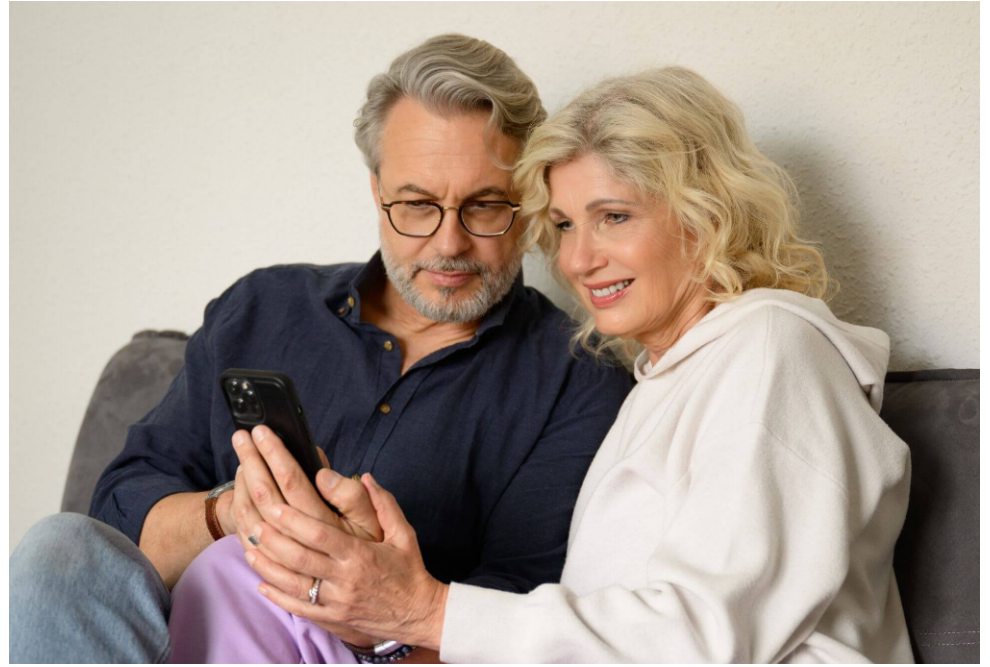
Peter #516

Languages:	german, english, french, spanish, swedish
Hair color:	gray
Eye color:	brown, green, gray
Height:	190 cm / 6' 3"
Clothing size:	110 EU / 48 UK / XXL
Shoe size:	44/45 EU/ 10 UK/ 10.5 US
Measurements:	114-95-105 cm / 45"-37.5"-41.5"
Domicile:	Toppenstedt (Niedersachsen)
Year of birth:	1964
Studies/education:	Dipl.-Ing. Maschinenbau
Current job:	Internationaler Vertrieb Luftfahrt & Model
Talents:	viele Sportarten, Turniertanz Standart & Latein, argentinischer Tango

WIMA | MODELS











Peter #516

WIMA | Models GmbH
+49 (0) 173 7845031
info@wima-models.de
www.wima-models.de

WIMA | MODELS